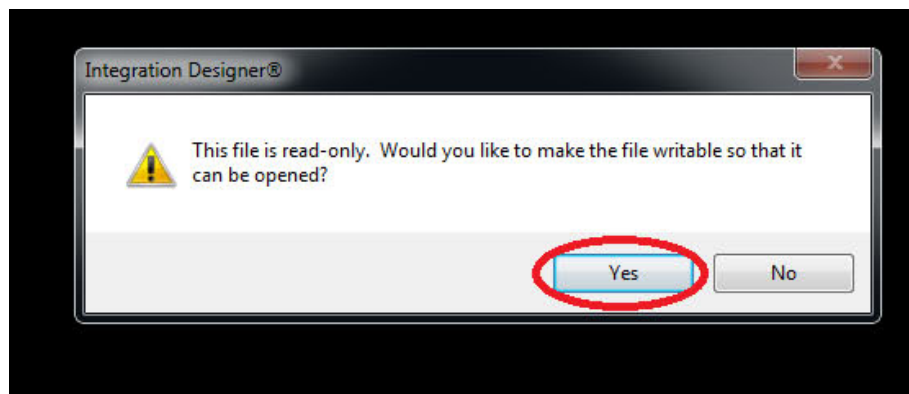


RTI MMS Control Driver and Sample Program

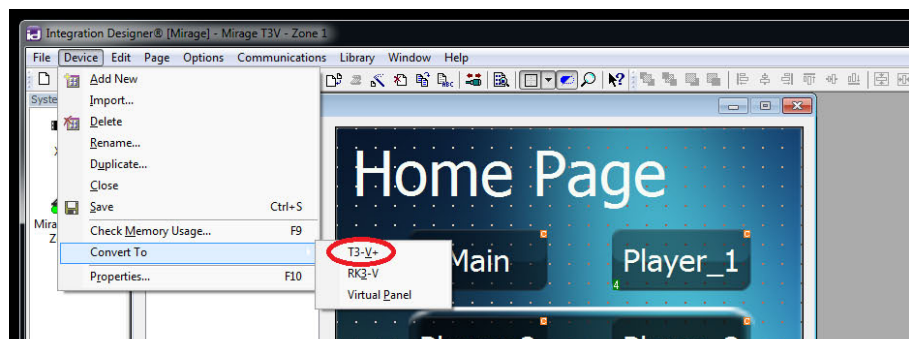
Autonomic is committed to updating and supporting our products to provide dealers with maximum value and the best digital media control solutions. Please email our support team at support@autonomic-controls.com or call 914-598-1647 if you have any questions regarding our products.

Running the RTI Sample Program

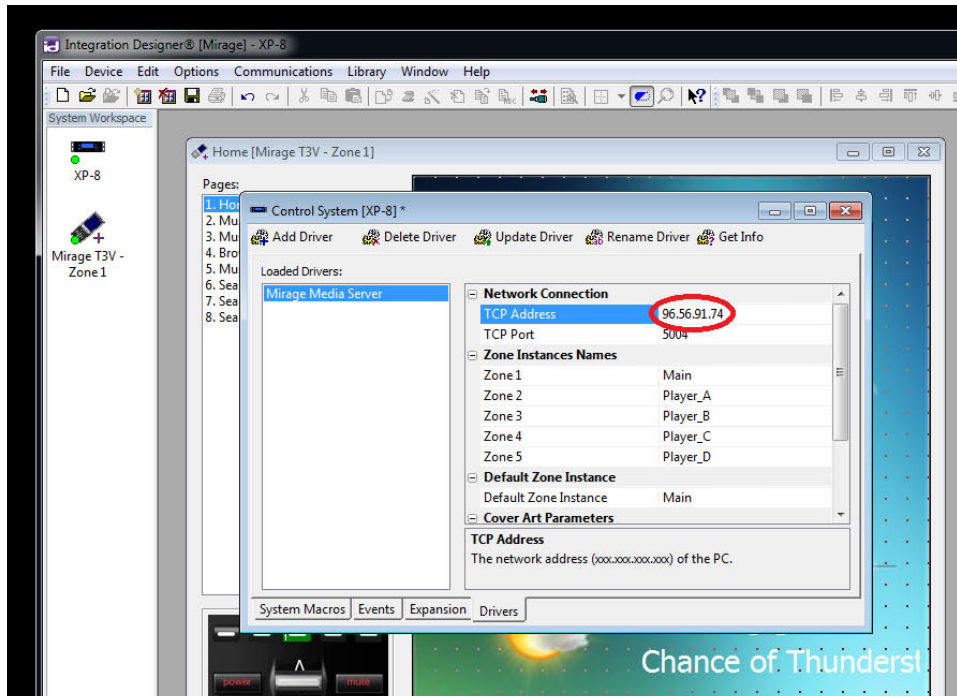
Open the Mirage.rti sample program in the included zip file. Select Yes when prompted to make the file writable.



The Sample Program included in the .zip file demonstrates the integration of the Mirage device driver with an XP8 processor and a T3V Remote Control. In Integration Designer, select the Mirage T3V remote icon and convert it to another device type if necessary.



Select the XP8 Processor in the device column, and select the Mirage device in the driver tab to adjust the Device Properties.



TCP Address Insert the address of your MMS-5, MMS-2, or MCS Media Server.

Port Insert the control port. On MMS-5 and MMS-2 servers is fixed on 5004 and is the default for MCS

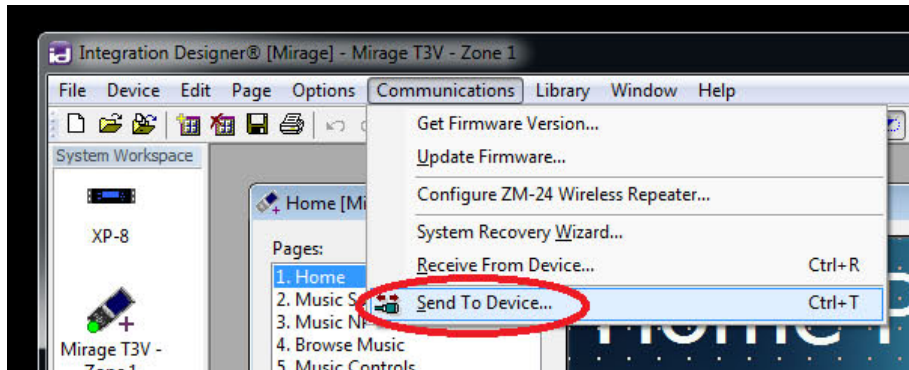
Zone Instance Names Insert the names of your zone instance names. These are fixed to the defaults on MMS-5 and MMS-2 servers.

Default Zone Instance Enter the name of the default instance (Usually Main or Player_A)

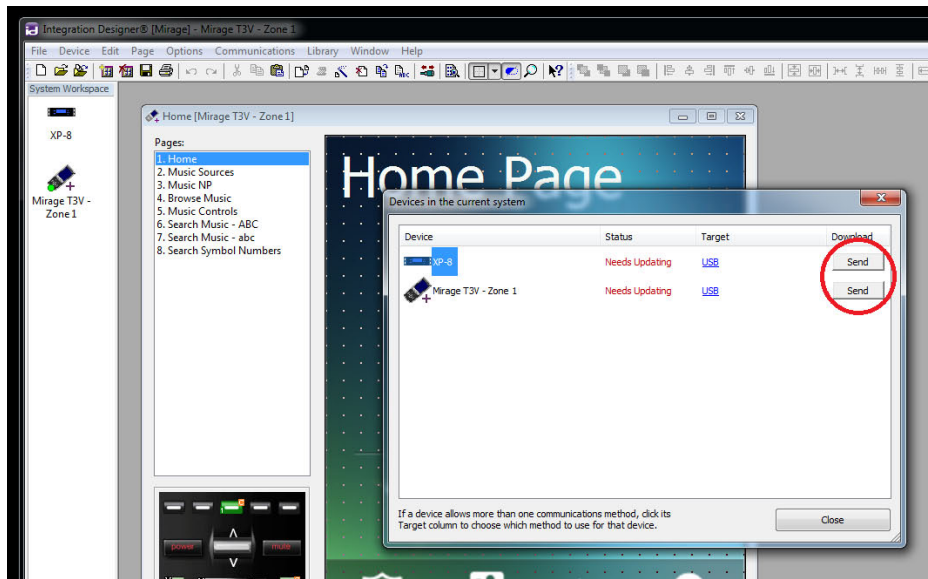
Cover Art Parameters Enter the height and width for the Now Playing Cover Art.

- continued -

When you have completed setting the properties, you select **Send to Device...** from the **Communications** menu.



The first time you upload the program to your XP-8 processor, you may have to use the USB connection.



Your sample Mirage Program should now be operational.